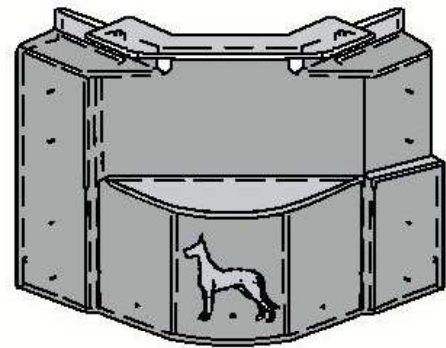
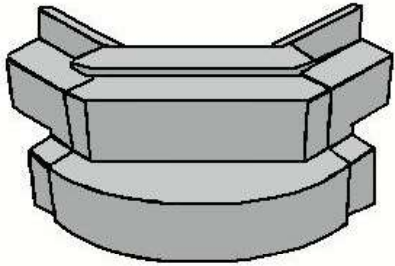


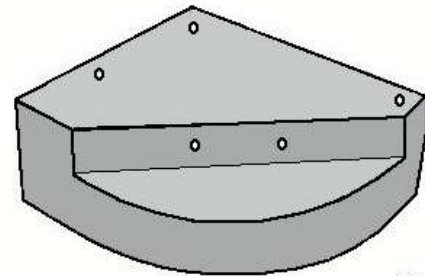
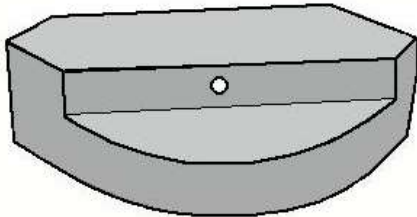
# STRUCTURE - AVANT

## CORNIÈRE



4411-0-616	GREAT DANE	gauche	Champion CP
4411-0-617	GREAT DANE	droite	Champion CP

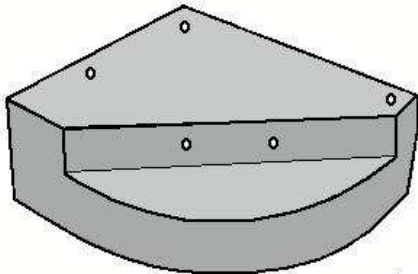
4411-0-500	FRUEHAUF		plastique
------------	----------	--	-----------



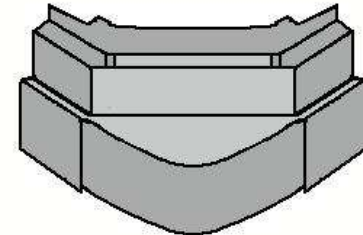
Superseal 2008 +

4411-0-600	GREAT DANE	gauche	Superseal
4411-0-601	GREAT DANE	droite	Superseal

4411-0-602	GREAT DANE	gauche	Collerette 1-3/4" haut
4411-0-603	GREAT DANE	droite	Collerette 1-3/4" haut



Superseal 2008 +



Série P

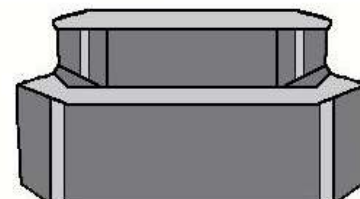
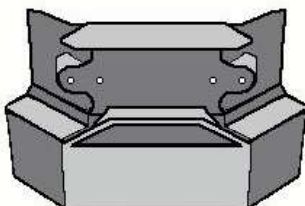
4411-0-604	GREAT DANE	gauche	Collerette 1-3/4" haut
4411-0-605	GREAT DANE	droite	Collerette 1-3/4" haut

4411-0-618	GREAT DANE		fourgon non-isolé
------------	------------	--	-------------------



4411-0-400	MANAC	Ancien modèle	
------------	-------	---------------	--

4411-0-401	MANAC	Nouveau modèle	
------------	-------	----------------	--

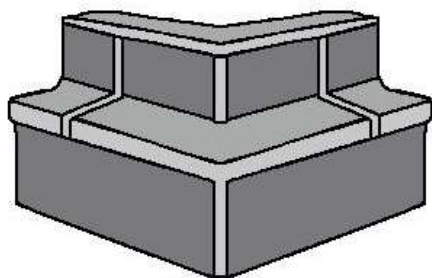


4411-0-300	MOND	murs aluminium & FRP	
------------	------	----------------------	--

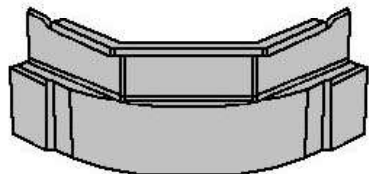
4411-0-301	MOND	Coin en biseau	murs FRP	Ancien modèle
------------	------	----------------	----------	---------------

# STRUCTURE - AVANT

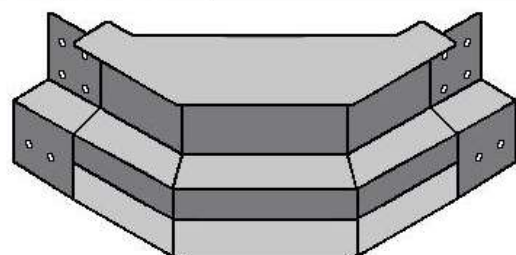
## CORNIÈRE



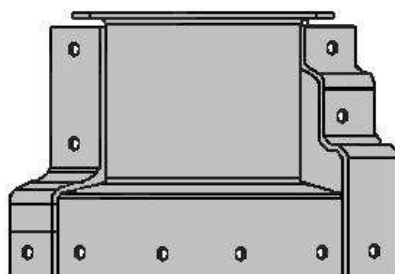
4411-0-302 | MOND | Coin carré | murs FRP



4411-0-611 | STRICK

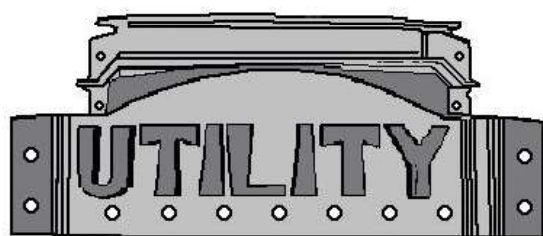


4411-0-900 | STOUGHTON | Régulier mur aluminium



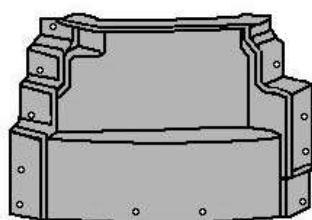
4411-0-202 | TRAILMOBILE | gauche | Ultraplate | Ancien modèle

4411-0-203 | TRAILMOBILE | droite | Ultraplate | Ancien modèle



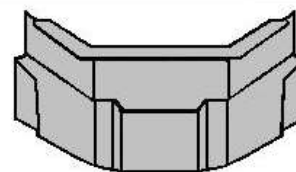
4411-0-100 | UTILITY | gauche

4411-0-101 | UTILITY | droite

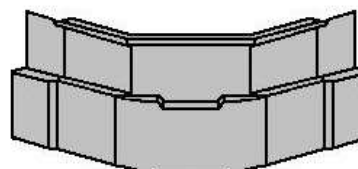


4411-0-104 | UTILITY | gauche

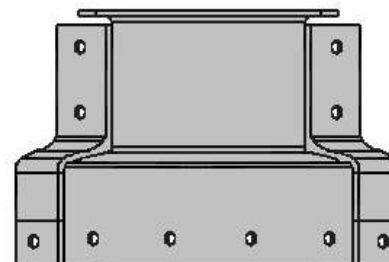
4411-0-105 | UTILITY | droite



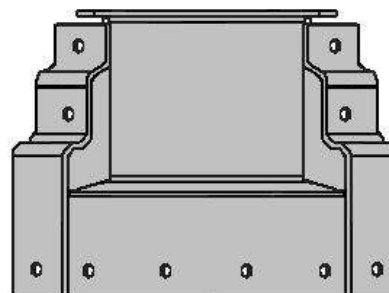
4411-0-610 | STRICK | Rayon 7"



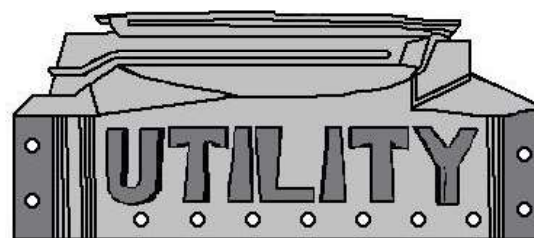
4411-0-612 | STRICK | Drive box by Manac | Rayon 4"



4411-0-200 | TRAILMOBILE | Addvantage + modèle standard

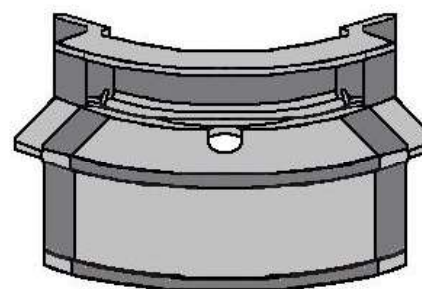


4411-0-206 | TRAILMOBILE | Ultraplate | Universelle



4411-0-102 | UTILITY | gauche | 2000R après décembre 1998

4411-0-103 | UTILITY | droite | 2000R après décembre 1998



4411-0-623 | VANGUARD | Réfrigéré